



An Introduction

Group Name: - New Participants / Informational Session

Source: **oneM2M MARCOM** - Richard Brennan MARCOM Chair

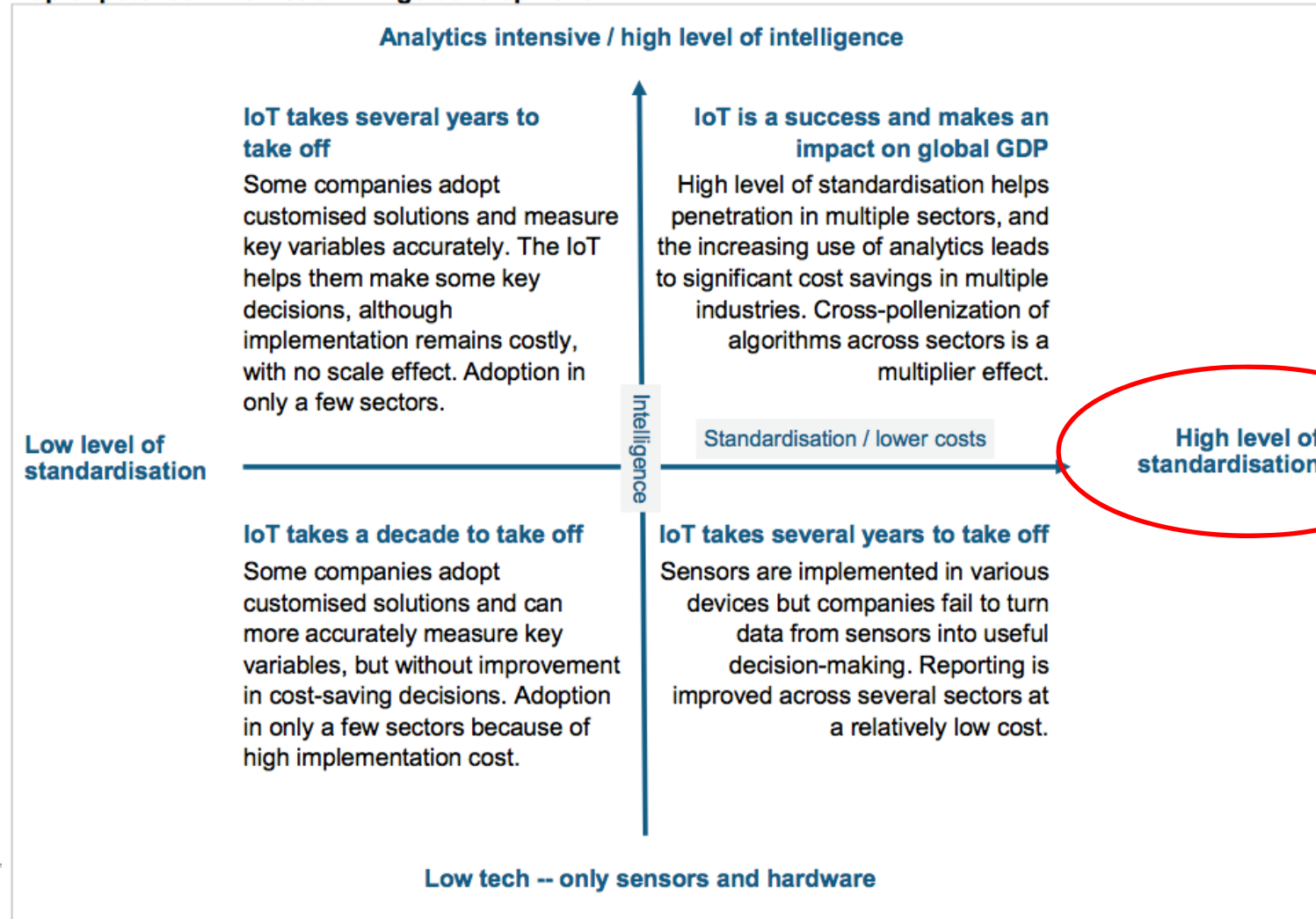
Date: 2014-07-28

Meeting: oneM2M Technical Plenary 12 - Sophia-Antipolis FR

Market Situation

Exhibit 4

Map of potential Internet of Things development





Mission

oneM2M is working to **unify** the Global M2M Community, by enabling the federation and interoperability of M2M systems, across multiple networks and topologies.

Introduction

- On July 24, 2012 seven of the world's leading ICT Standards Development Organizations (SDOs) launched a new global organisation: the oneM2M Partnership Project: <http://www.oneM2M.org> to:
 - cooperate in the production of globally applicable, access-independent M2M Service Layer specifications, including Technical Specifications and Technical Reports related to M2M Solutions and
 - ensure the most efficient deployment of machine to machine (M2M) communications systems



Global Partners



Participation

- Levels of participation:
 - **Partner Type 1**
 - **Members** (*companies / organizations*) participate directly in Technical work
 - **Partner Type 2**
 - Contribute on behalf of their members for Technical work
 - **Associate Member**
 - Regulatory / Governmental

Join: <http://www.onem2m.org/join.cfm>

Docs: <http://www.onem2m.org/library/index.cfm>

News: <http://www.onem2m.org/subscribe.cfm>

Scope & Objectives

- **To develop:** Global M2M end-to-end specifications - using common use cases and architecture principles across multiple M2M applications to connect M2M devices with application servers worldwide with an access independent view of end-to-end services
- **To define:** Service Layer platform with high level / detailed service architecture including:
 - Protocols/APIs/standard objects (open interfaces & protocols)
 - Interoperability, test and conformance specifications
 - Common use cases, terminal/module aspects
 - Service Layer interfaces/APIs between:
 - Application and Service Layers
 - Service Layer and communication functions
 - Security and privacy aspects
 - authentication, encryption, integrity verification

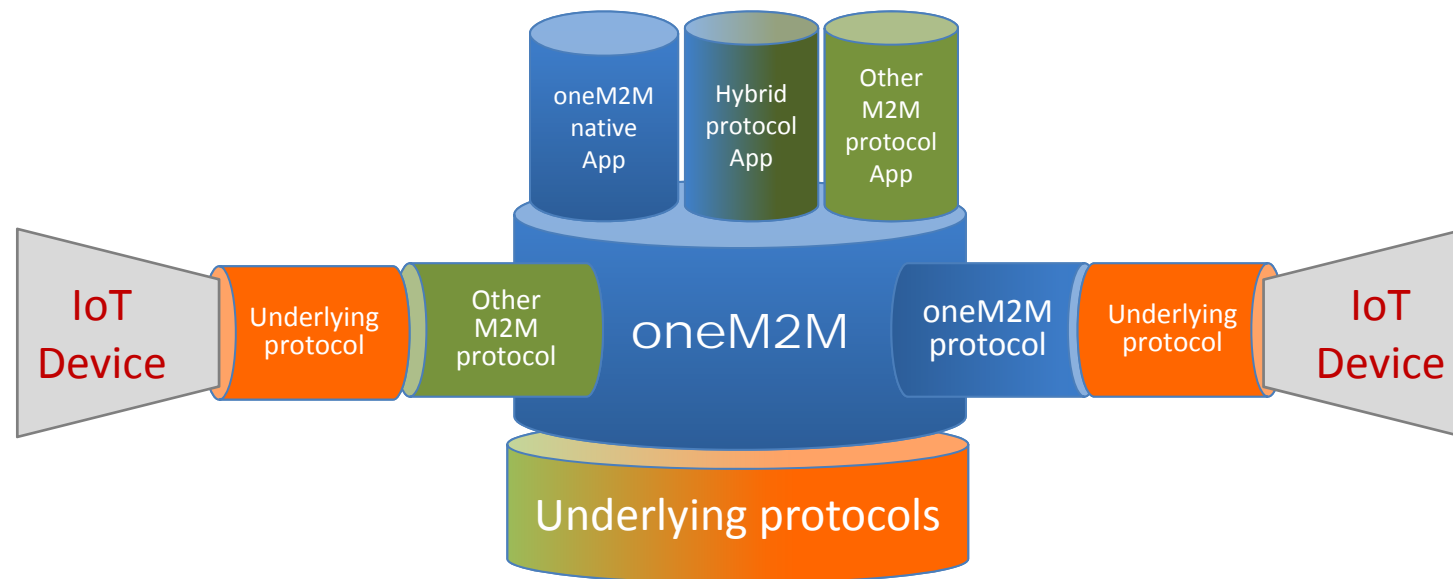
M2M Service Layer

Middleware - supporting secure end-to-end data/control exchange between M2M devices and customer applications by providing functions for remote provisioning & activation, authentication, encryption, connectivity setup, buffering, synchronization, aggregation and device management

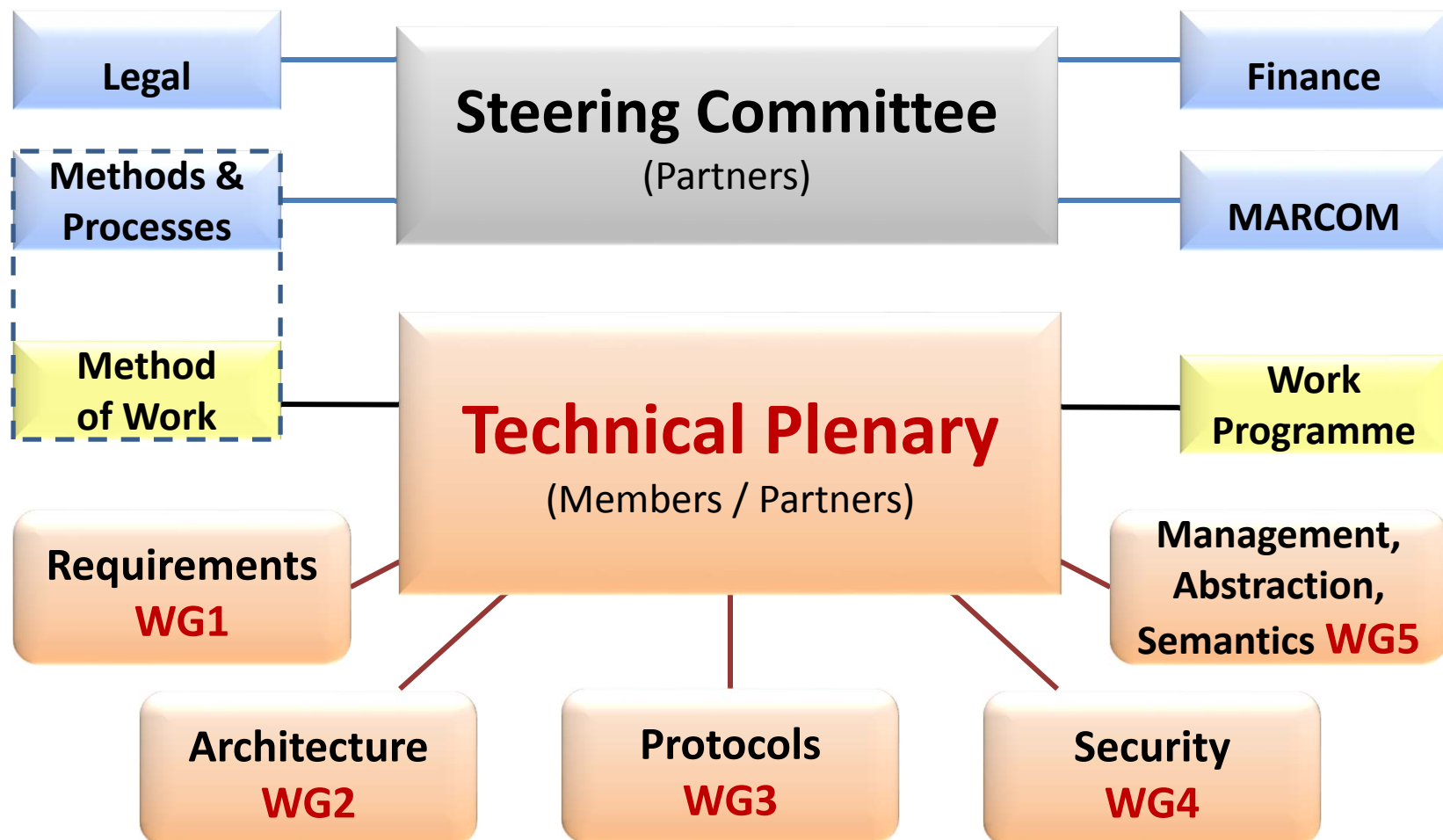
- **software layer**
 - **sits between M2M applications and communication elements that provides data transport**
 - **normally rides on top of IP**
 - **provides commonly needed functions for M2M applications across different industry segments**
-

Vision:

Interconnecting the Internet of Things;
Connecting the Un-connected



Organization



Steering Committee

- SC Participation:
 - One member designated by each partner
 - Chair and Vice Chairs of the Technical Plenary
- SC Leadership: Elected 24 July 2014
 - **SC Chair:** Fran O'Brian - Cisco (TIA)
 - **SC Vice Chair:** Thomas Li - Huawei (CCSA)
 - **SC Vice Chair:** Puneet Jain - Intel (ATIS)
 - **SC Vice Chair:** Enrico Scarrone, Telecom Italia (ETSI)

Steering Committee

- **Key Steering Committee responsibilities:**
 - Developing, approving, and maintaining the oneM2M purpose and scope and oneM2M Working Procedures;
 - Approving applications from organizations wishing to join oneM2M as new Partners;
 - Managing the oneM2M Secretariat;
 - Handling appeals from Partners and Members on procedural matters; and
 - Approving liaison relationships
 - Overseeing subcommittees: Finance committee, Legal Group, MarCom, and Methods and Procedures

FRAND

Fair, Reasonable, and Non-Discriminatory

- All the **Partners Type 1** of oneM2M have IPR policies that support a FRAND IPR regime. The IPR policies of each of the Partners Type 1 of oneM2M also recognize the importance of respecting the rights of owners of essential/potentially essential IPRs. Thus, the IPR policies seek to balance such rights with the ability of implementers to access essential IPRs under Fair, Reasonable and Non-Discriminatory (FRAND) terms and conditions.
 - Each **oneM2M Member** is required to comply with the disclosure obligations of that admitting Partner's IPR policies, procedures and guidelines with respect to IPRs that are or may be essential to Technical Specifications and/or Technical Reports developed in oneM2M. If a Member engages in oneM2M activities through more than one Partner, then the Member shall be required to comply with the IPR policies, procedures and guidelines of all Partners which have admitted such a Member.
-

Consensus

- **General agreement**, characterized by the absence of sustained opposition to substantial issues by any important part of the concerned interest and by a process that involves seeking to take into account the views of all parties concerned and to reconcile any conflicting arguments.
(Note: consensus need not imply unanimity).
-

TP/WG Work Areas

- WG1 - Requirements
 - **Input accepted on more than 100 service requirements**
 - WG2 - Architecture
 - **Service-layer architectural options**
 - WG3 - Protocols
 - **Protocols for service layer, and interoperability**
 - WG4 - Security
 - **Ensuring Security and Privacy aspects are considered**
 - WG5 - Management, Abstraction, & Semantics
 - **Providing device management; Working on semantic library**
-

TP/WG Work Program

- **Work Items**
 - Proposed to TP (Technical Plenary)
Scope / Rapporteur / 4 Supporting Companies
 - Defines one or more deliverables
 - **Deliverable**
 - Intended to be made available for distribution beyond the membership of the Technical Plenary, such as to the Partners Type 1.
A deliverable may be one of:
TR (Technical Report) or TS (Technical Specification)
 - **Release**
 - A set of ratified Deliverables that are technically consistent at the time of the freeze of the Release.
-

TP/WG Working Process

- Meeting Notice / Invitation (*Regular or ad-hoc*)
 - Agenda
 - Contributions
 - Discussion - *as/required*
 - Revisions - *as/required*
 - Agreement (*or noted, withdrawn etc...*)
 - Added to draft deliverable (*by Rapporteur*)
 - Approval of final Draft
-

Partner Publication Process

- oneM2M TP (Technical Plenary) Ratification of WG-Approved Deliverable
 - Deliverable is made available to oneM2M **Partner Type 1** for their Publication on a Regional basis
 - Partners choose to publish according to their individual process and timing
-

References

- oneM2M Web: <http://www.onem2m.org>
 - oneM2M Portal: <http://member.onem2m.org>
 - Steering Committee: <http://www.onem2m.org/schome.cfm>
 - Technical Plenary: <http://www.onem2m.org/tphome.cfm>
[WG1:REQ](#) [WG2:ARC](#) [WG3:PRO](#) [WG4:SEC](#) [WG5:MAS](#)
 - Document templates: http://member.onem2m.org/Static_pages/Templates/Index.htm
 - Work Programme: http://member.onem2m.org/static_Pages/others/WPM-pages/Work-Programme.htm
 - Rules and Procedures: <http://member.onem2m.org/website/Procs.aspx>
-



www.oneM2M.org