



Introduction of GlobalPlatform as partner Type 2

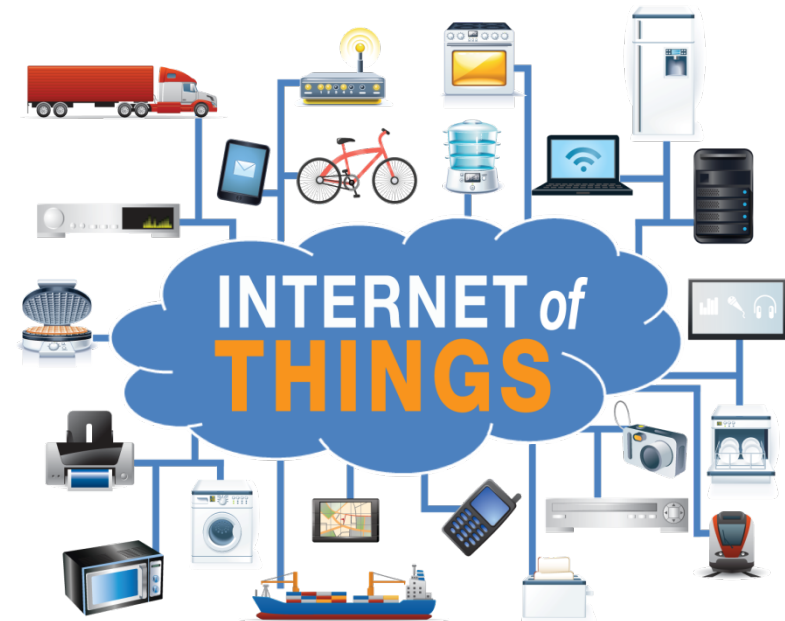
TP-2015-0748

Sebastian Hans / ORACLE

GlobalPlatform IoT Task Force chair

oneM2M TP#18

July 2015



@GlobalPlatform_



www.linkedin.com/company/globalplatform



Welcome

GlobalPlatform Mission

- GlobalPlatform works across industries to identify, develop and publish specifications which facilitate the secure and interoperable deployment and management of multiple embedded applications on secure chip technology
- GlobalPlatform Specifications enable trusted end-to-end solutions which serve multiple actors and support several business models



GlobalPlatform Vision

GLOBALPLATFORM™

- Member-driven organization to define technology standards for cards, devices and systems and create foundation for future growth.
- License royalty-free card, device, and systems specifications.
- Compliance Program tools to verify card, device, systems compliance to GlobalPlatform technology.
- Foster adoption of secure chip technology standards and implementations across industries.



GlobalPlatform Positioning

GLOBALPLATFORM

GlobalPlatform is *the* standard for managing applications on secure chip technology



TRUSTED EXECUTION ENVIRONMENT



MESSAGING



SECURE ELEMENT

Across several market sectors and in converging sectors



PREMIUM CONTENT



FINANCIAL



TELECOM



GOVERNMENT



AUTOMOTIVE



HEALTHCARE



RETAIL



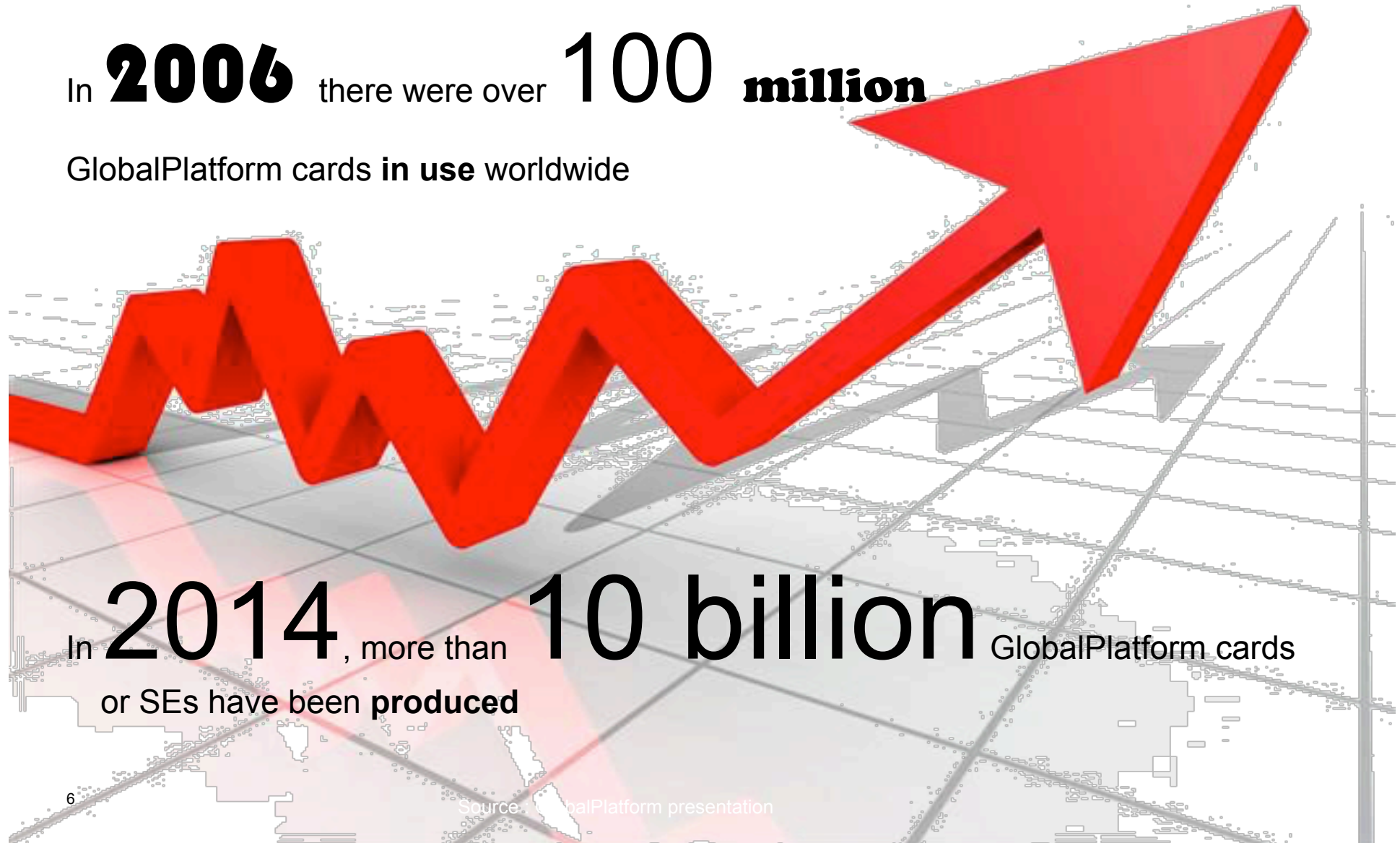
TRANSIT

Strong Rate of Growth

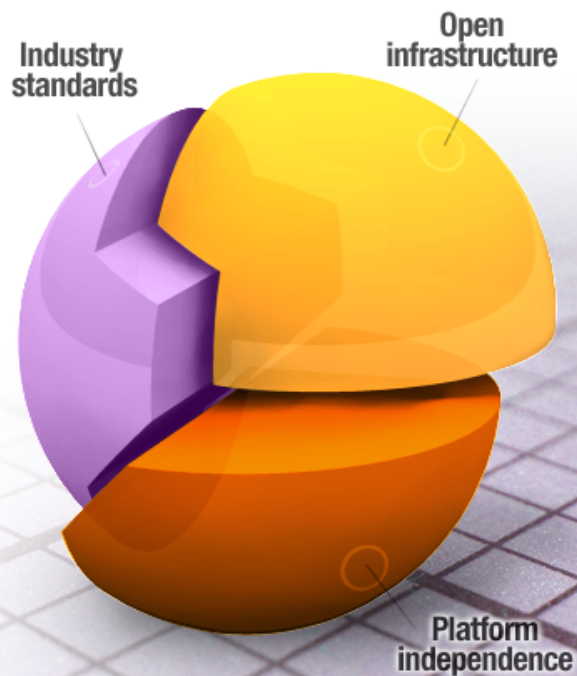
GLOBALPLATFORM

In **2006** there were over **100 million**

GlobalPlatform cards **in use** worldwide



GlobalPlatform At-a-Glance



What is the output of GlobalPlatform?

- Specifications – technical industry guidelines
- Configurations – applying the guidelines to different market sectors
- Security Certifications – streamlining security requirements & testing
- Industry Compliance Program – confirming a product’s functionality aligns to GlobalPlatform technology
- Educating the Industry – white papers & technical documents
- Workshops – specification training & educational

GlobalPlatform Members

GLOBALPLATFORM



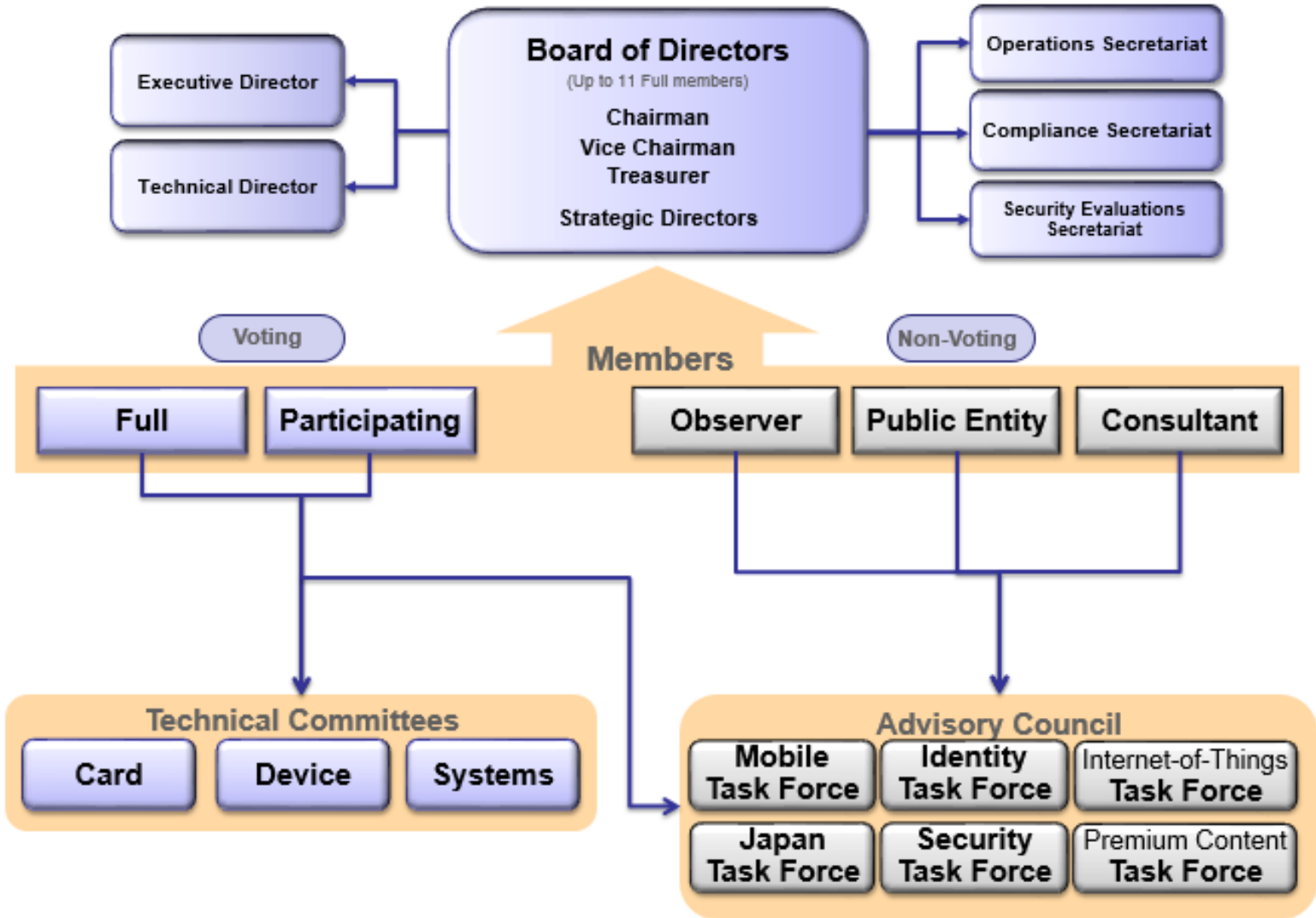
Our Collaborative Industry Partners

GLOBALPLATFORM



GlobalPlatform Structure

Organizational Structure



Why this Impressive Success ?

- Pilots have demonstrated the attractiveness of a multi-application device to the end-user
 - Smartphone: always there, always on
- GlobalPlatform technology is neutral regarding the business model used in a project (e.g. multiple form factors, multiple businesses...)
- GlobalPlatform integrates with external standardization
- GlobalPlatform has had a strong knowledge of 'ecosystems' since 1999
 - Learned the hard way
 - Each party (with its differences) are respected
- The same 'object' supports different models
 - Investment from different actors in different models are shared
 - → eSE deployment helps UICC deployment and motivate SD deployment

**In the end it's about enabling application & services whatever
the business environment supported by multiple players
worldwide**



GlobalPlatform and IoT

- IoT devices are used in the context of critical infrastructure or potentially dangerous systems, such as transportation systems, water pumps, electric substations and medical devices.

28th Chaos Communication Congress
Behind Enemy Lines

Smart Hacking For Privacy

Advanced metering devices (aka smart meters) are nowadays networks in Germany, in other parts of Europe and in the US. The amendment especially in Germany they become more and more new and refurbished buildings.

Unfortunately, smart meters are able to become surveillance devices for their customers leading to unprecedented invasions of consumer privacy. Consumption data is transmitted to the utility company in principle and monitoring of equipment within consumer buildings in different reports.

This talk is about the Discovery / Easy. In our analysis we found several security bugs, missing security features for the metering devices, unencrypted, although otherwise stated as encrypted, performed on a sealed, fully functionally.

In our presentation we will mainly focus on the following points:

THREAT LEVEL

It's Insanely Easy to Hack Hospital Equipment

BY KIM ZETTER 04.25.14 | 6:30 AM | PERMALINK

[f Share](#) < 4.0k [t Tweet](#) < 3,006 [g+1](#) < 465 [in Share](#) < 1,372 [Pin it](#)



SECURITY

Students hack Tesla Model S, make all its doors pop open IN MOTION

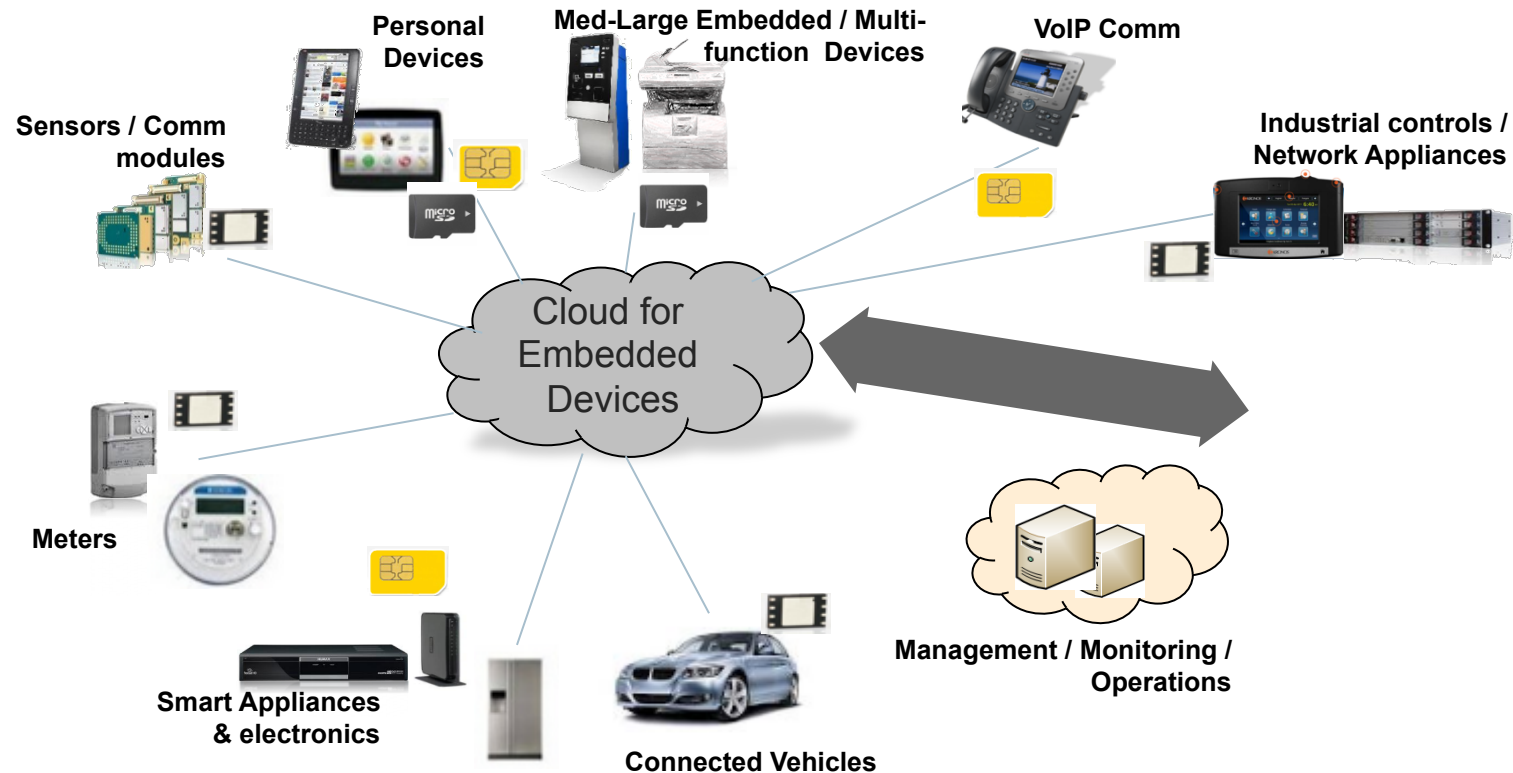
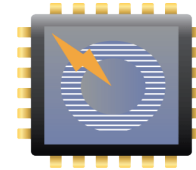
Toot the horn, too

By Darren Pauli, 21 Jul 2014

[t Follow](#) < 2,473 followers

Devices in Scope for GlobalPlatform's IoT Task Force

- The IoT Task Force is focusing on M2M/IoT devices with a secure element (SE) or a TEE
 - the SE is a tamper resistant element
 - no restrictions on the form factor



- What can be the role of GlobalPlatform in the IoT market ?
 - Focus on our existing assets and how they can be leveraged in this new market
- GlobalPlatform specifications define a Secure Element (SE), which is a removable or non-removable semiconductor device. These are often used in the form factor of a SIM/UICC card, a generic smart card, or a solderable secure device.
- GlobalPlatform defines the TEE platform as secure environment running in an isolated process on the device to protect assets and execute trusted code
- ***Specifically, GP assets can be used in the following IoT contexts:***
 - Secure Environment for IoT Device/Gateway (SE,eSE,TEE)
 - Trust Management in Multi-Application and Multi-Actor Environments
 - Provisioning of Credentials and Applications
 - Compliance Testing and Security Evaluation

- One category of IoT devices is those required to have long lifetimes because they are built-in or part of an infrastructure that is amortized over decades
- For a service to remain competitive throughout such a time span it must be possible to efficiently manage:
 - patching, updating, reconfiguring, or changing data or software of the devices
- It is not practical in many IoT deployments to manage devices on-site:
 - the actual device may be hard to access due to its placement
 - the device may not even have a user interface
 - the cost of a person visiting sites may not be supported by the business model
- Such lifetime constraints are particularly sensitive for security, as threats are continuously evolving
- ***GlobalPlatform sees a strong need for 'efficient and standardized' remote management of secure elements in IoT***



- Examples of IoT/M2M organisations that leverage already existing GlobalPlatform technology:
 - oneM2M devices with a security environment
 - can be a UICC but can be any other type of secure environment, e.g. SE, or Trusted Execution Environment (TEE)
 - oneM2M leverages extensively the technology from GlobalPlatform in their security specification
 - OMA Lightweight M2M device
 - configuration of the device security from the smart card
 - loading data and credentials for the initial setup of the device from a file system in the card
 - secure channel protocol from GlobalPlatform between SE and Application in the device
 - GSMA
 - GlobalPlatform technology is the baseline for their eUICC specification targeting the M2M market

Current Work in the IoT Task Force

- Threat analysis of IoT architecture and deployments
 - Mapping of GlobalPlatform technology to security requirements and development of new requirements for further development in GlobalPlatform
- Adoption of existing and development of new specification for the management of eSE/TEE in IoT deployments
 - Today we can handle perform management based on the direct communication between Admin Server and UICC or Admin Server and hosting device
 - Need to further development for end-to-end security with multiple hops between Admin Server and end device
- Integration of the eSE/TEE with Bluetooth LE
 - Discovery and communication
- Integration with the TPM world for new markets like IoT and Automotive
 - Increasing the value of the Secure Component



The Standard for Managing Applications on Secure Chip Technology

Download the Latest Spec's

- > Card
- > Device
- > Systems
- > Spec's under public review

Become a Member

- > Influence specifications development
- > Enhance your global industry positioning
- > Build industry relationships

Join Now >

Made Simple Guides

GlobalPlatform has launched a series of guides that aim to explain in simple terms the technology developments that it is working on and how these will benefit the industry.

[Read More >](#)

Technical Priorities

- > Identity Task Force
- > Internet-Of-Things Task Force
- > Japan Task Force
- > Mobile Task Force
- > Premium Content Task Force
- > Security Task Force
- > Card Committee
- > Device Committee
- > Systems Committee

Enter Email Address

OK

I want to receive specification updates

GlobalPlatform News

- > 06 May 15 - Executive Newsletter
- > 23 Apr 15 - GlobalPlatform Launches Identity Task Force
- > 10 Mar 15 - Thales Becomes GlobalPlatform Member
- > 03 Mar 15 - GlobalPlatform Welcomes New Doone to its Membership
- > More news

Global Events & Discounts

Recent Updates/Latest Content

View highlights from GlobalPlatform's 2014 TEE conference below and **submit your speaking proposal for 2015 now!**



Infographic: Learn more about the **trusted execution environment (TEE)** and the use cases to protect services in connected devices

GlobalPlatform Compliance Program



The compliance program evaluates the functional

Tweets

Follow



GlobalPlatform™
@GlobalPlatform_

2h



Thank you!
