

**Hewlett Packard  
Enterprise**

# Delivering IoT Value Through oneM2M Compliance

Nigel Upton, General Manager, Internet of Things

July 12<sup>th</sup> 2017

# Hewlett Packard Enterprise (HPE) Point of View

## Enabling customers to capitalize on IoT

The opportunity is huge – 26B devices – 10% of world data –  
\$1.9T economic value add – \$322B vendor revenues are expected by 2020\*



**Situation today**

Digitization affects every industry. Requiring disruptive thinking – across the whole organizations



**Disruption**

Today agile programming, analytics, edge computing and improved connectivity provide the disruptive foundation to accelerate



**Transformation**

IoT demands a broad range of capabilities and across an open and scalable ecosystem



**Partnership**

HPE is a well established player in the IT industry. Our business know how enables us to be an ideal integration partner for the enterprise

# Hewlett Packard Enterprise (HPE) in IoT

Enterprise / Smart Building		Wide Area IoT / Smart Cities			Industrial / Manufacturing			

**Aruba Mobile First Platform**

Connectivity, Security and Asset Tracking

**Universal IoT Platform**

Data acquisition, normalization, device management

LAN	Wi-Fi	BLE	WAN	LTE / LPWAN	Converged Edge Systems
					Compute, control and data acquisition

Ecosystem



HPE Platforms



Edge Infrastructure



# HPE Universal IoT Platform Value Proposition



## IoT Platform

Enable and manage the value chain

### Single-source Provider

- Software, Hardware, Services, Consulting – along with a Continuously Growing large partner ecosystem for deploying IoT services
- Carrier-grade scalability and SLA in compliance to meet Enterprise IT-grade requirements

### HPE Universal IoT Platform

- A “Horizontal” Platform to enable “Vertical” Use Cases:
  - *Connected Cars, Smart Cities, Track & Trace, etc.*
- Network-Agnostic:
  - *Cellular (3G/4G), LPWAN (LoRa, SigFox), Short-Range (Wi-Fi, BLE, ZigBee, Z-Wave)*
- Differentiators:
  - *OneM2M and 3GPP standards aligned*
  - *Support for both SIM and Non-SIM IoT devices*
  - *IoT device vendor-independence*
  - *Support for IoT data acquisition over any IoT protocol*
  - *Powerful and world-class IoT analytics*

### Pricing Model with Unmatched Values

- Best possible pricing based on HPE’s global scale, cost efficiencies, best-of-breed components and deep vertical expertise
- Pricing model also aligned with IoT market with low ARPD
- Price Per Device – along with Volume-based Tiered Pricing

# IoT GTM Focus Areas and customer accounts

## Future Cities

- Smart Lighting
- Smart Transportation (Parking and Traffic)
- Smart Waste management
- Remote Water Quality Management

## Connected Cars

- Rain Detection
- Strong Wind Detection
- Pothole Detection
- Location-based Headlights (Geofencing)
- Smart Home Integration (Home Automation Integrations)

## Smart Surveillance

- Smart Home (from burglaries, baby monitoring)
- Independence for the Elderly
- Smart Law Enforcement

## Fleet Management

- Increase productivity
- Eliminate false overtimes
- Track stolen vehicles
- Track vehicle routes

## Precision Agriculture

- Smart irrigation management
- Smart plantation assets tracking / management
- Remote monitoring of yield efficiency
- Smart pest control
- Agribots
- Smart drones / tractors

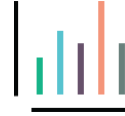
# Managing Complexity Requires Platform Approach (not silos)



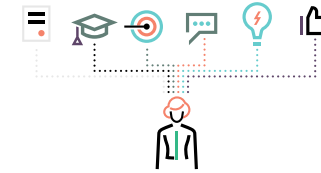
Connectivity & connected objects



Operations




Data, reporting, exposure



Innovation / new services



Costs

HPE Universal IoT Platform 



# HPE Universal IoT Platform

## Solution Architecture Details



**Device & Service Management**  
**Manages end-to-end lifecycle** of the IoT device, service and associated systems



**Connectivity Management Platform**  
 Provides portal to enterprises and CSPs to manage the entire IoT SIMs/eUICCs subscriptions and Inventory



**Network Interworking Proxy**  
 Provides **interoperability** between **heterogeneous** devices, sensors and gateways and the uniform oneM2M-compliant data model

### Data Service Cloud

Enables rapid development of IoT applications through reusable attributes, **reducing the cost and time-to-market**



### Data Analytics

Discover meaningful patterns in data collected from sensors to **expose and monetize** through applications



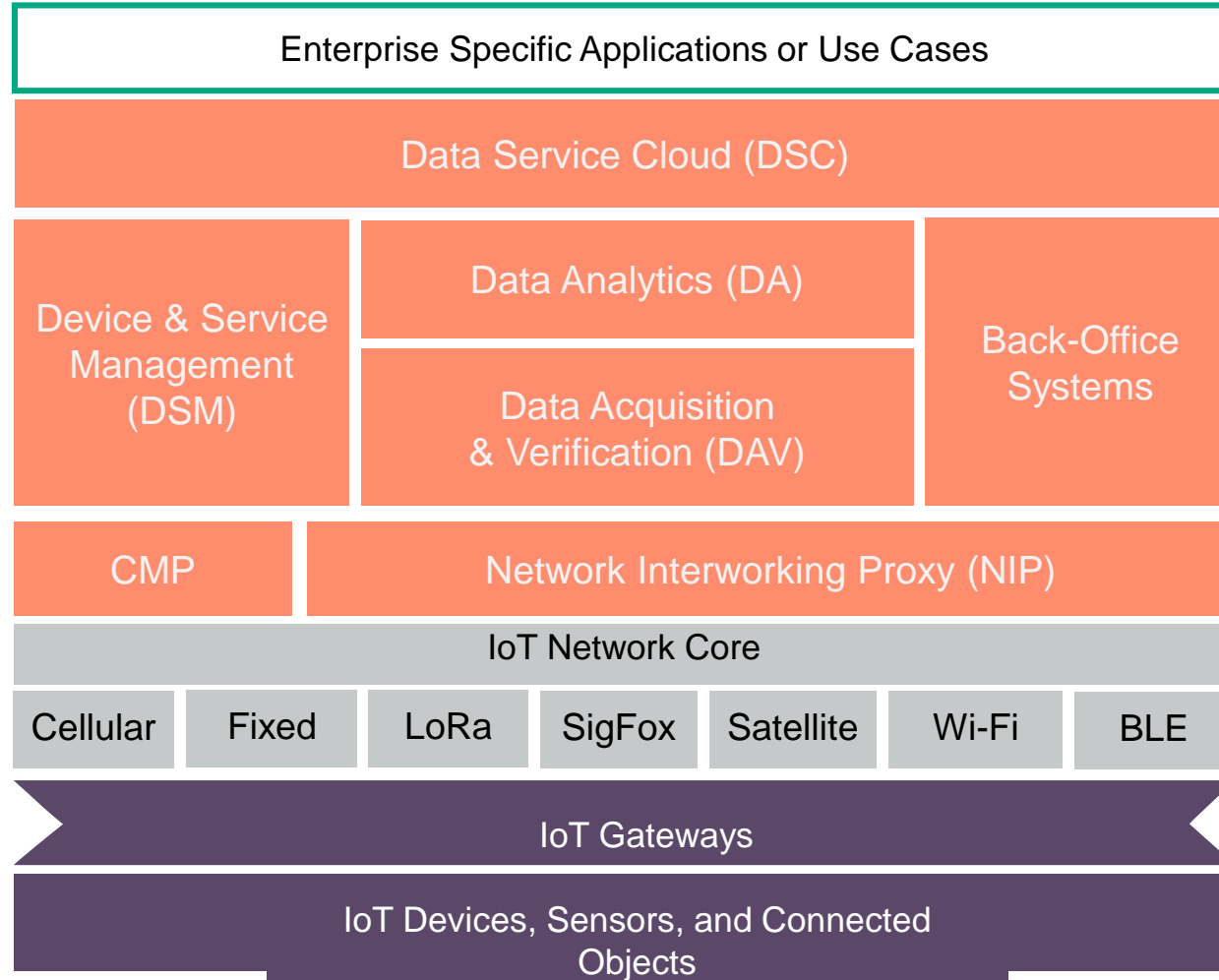
### Back-office Systems

Provides **consolidated operational view** of devices, gateways, and network information to **ease day-to-day operations**



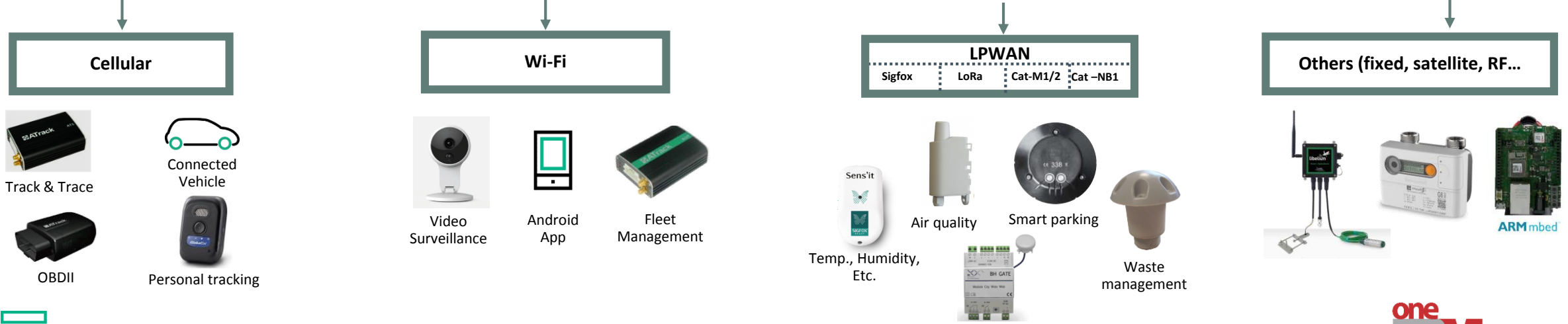
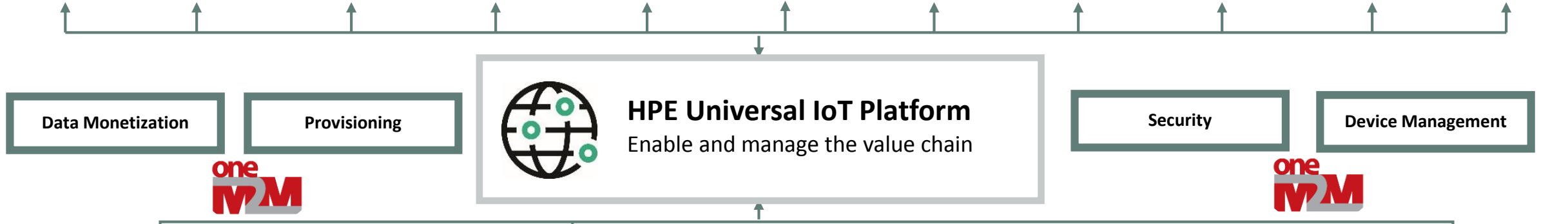
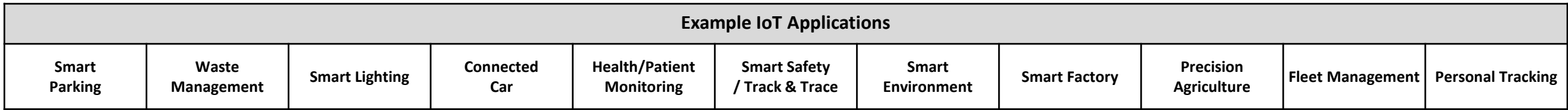
### Data Acquisition & Verification

Supports **secure bi-directional** data communication transforms, validates and processes the IoT data and **triggers actions** such as Complex Event Processing (CEP)



# Decoupling Application/Business From Connectivity

Streamlining provisioning, security, etc.





# LoRa/LPWAN on The HPE Universal IoT Platform

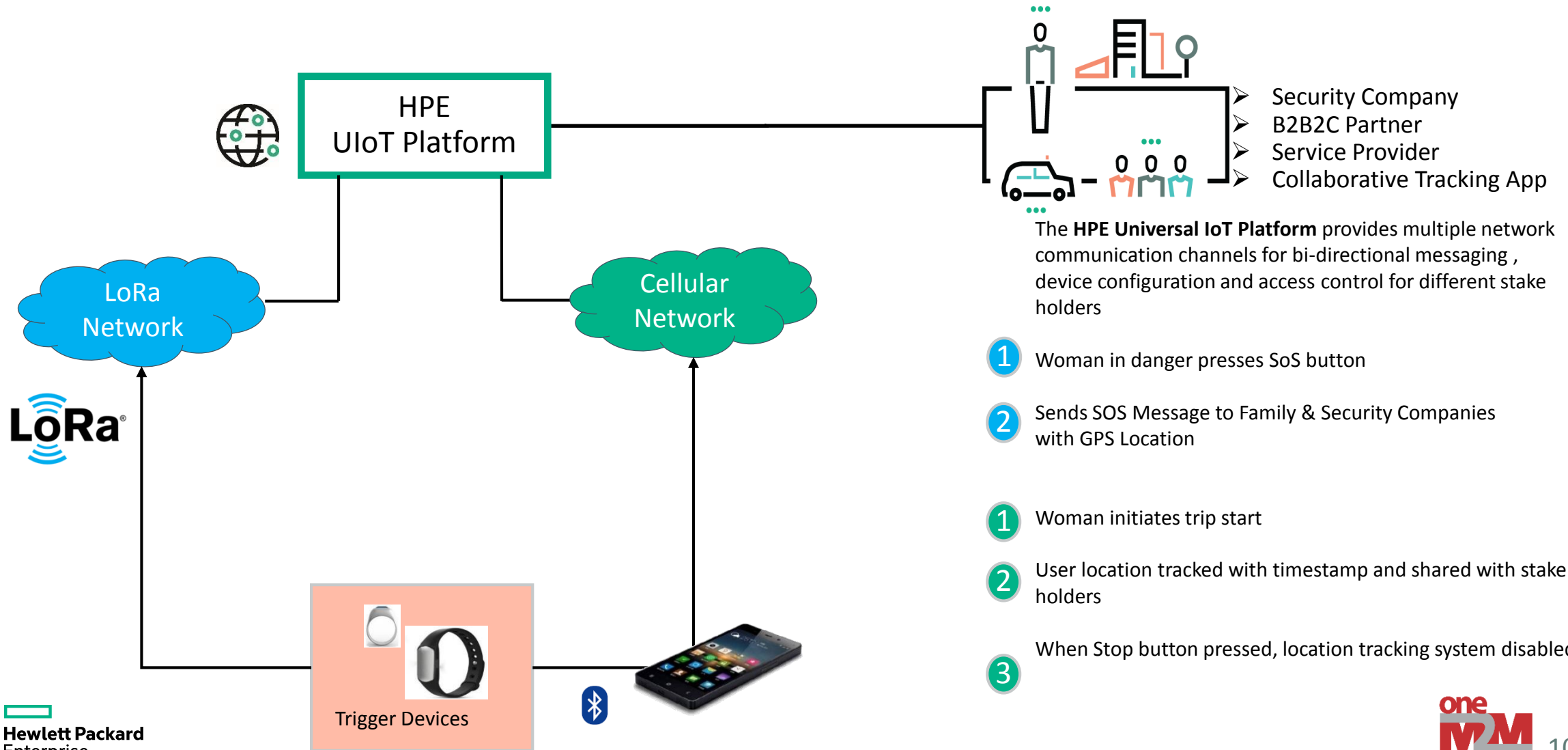


**Tata Communications** is deploying the world's largest LoRa network across cities and towns in India, covering 400M people in the first phase.

HPE Universal IoT platform helps deliver health safety and IoT connectivity services

# Human Safety use case

## HPE UIoT Platform enables addressing Woman Safety concerns in India



# Tata Communications

## Using the HPE Universal IoT Platform to deliver IoT services



### Requirements

The device and network-agnostic HPE Universal IoT Platform will help Tata Communications to develop new products and services across multiple industry verticals using a variety of connectivity options, protocols and interfaces

- Tata Communications, part of the \$100 billion diverse Tata Group conglomerate, is deploying the world's largest LoRa network across cities and towns in India, serving hundreds of millions of people and companies. The first phase targets to cover 400 million people across Tier 1, 2, 3 and 4 cities.
- The market leading device and network-agnostic HPE Universal IoT Platform will help Tata Communications in its digitization of smart cities and to develop new products and services across multiple industry verticals using a variety of connectivity options, protocols and interfaces

# Customers: Identidad IoT

Using the HPE Universal IoT Platform to deliver IoT services



## Requirements

The device and network-agnostic HPE Universal IoT Platform will help Identidad IoT develop new products and services across multiple industry verticals using a variety of connectivity options, protocols and interfaces

---

**“Identidad IoT has the knowledge and expertise to develop complete turnkey solutions for customers ranging from mobile network operators to service providers to end users. [The HPE Universal IoT Platform](#) is a robust IoT solution and we are confident that HPE is the right partner to lead our customers into the IoT era”**

*Andres Sanchez, CEO, Identidad IoT*



**HPE Universal IoT platform**

**Measuring & reporting key data points for precision farming:**

- UV light
- Air temperature
- Soil PH
- Humidity
- Water level
- Soil salinity


Low Power WAN (LPWAN)



Sensors

Sensors

Sensors



**inmarsat**

Mobile satellite service provider **Inmarsat** is helping a palm plantation in Malaysia to optimize its operations with sensors and data-driven intelligence. With HPE's cloud-based Universal IoT platform and IoT sensors placed throughout the plantation, tracking precise water consumption, humidity levels, and other critical data ensures more efficient operations.



**Hewlett Packard  
Enterprise**



# Thank you

For more information please visit our web site  
[hpe.com/CSP/IoT](http://hpe.com/CSP/IoT)

