



# Telco Edge Cloud introduction

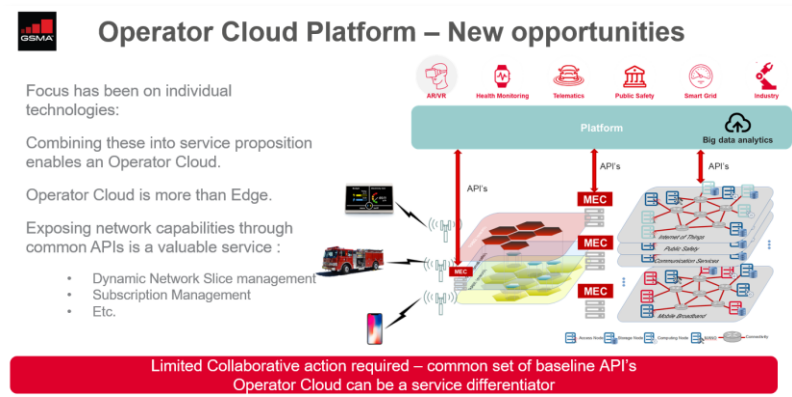
## Actions at GSMA to shape the Edge

16 July 2020

---



# The activity on Operator Cloud starts by Eo18 with a number of discussions at Strategy and Technology Groups



At that time, the **Technology Group** also includes **Edge Computing** in the list of priorities for 2019 as part of a set of disruptive technologies like AI/ML, AR/VR, quantum computing, blockchain, etc. that together with the **introduction of 5G** is going to change the landscape in the Telco Industry

At the beginning of 2019, GSMA starts considering the Operator Platform, that includes Edge, as a key element of the **Future Networks programme**

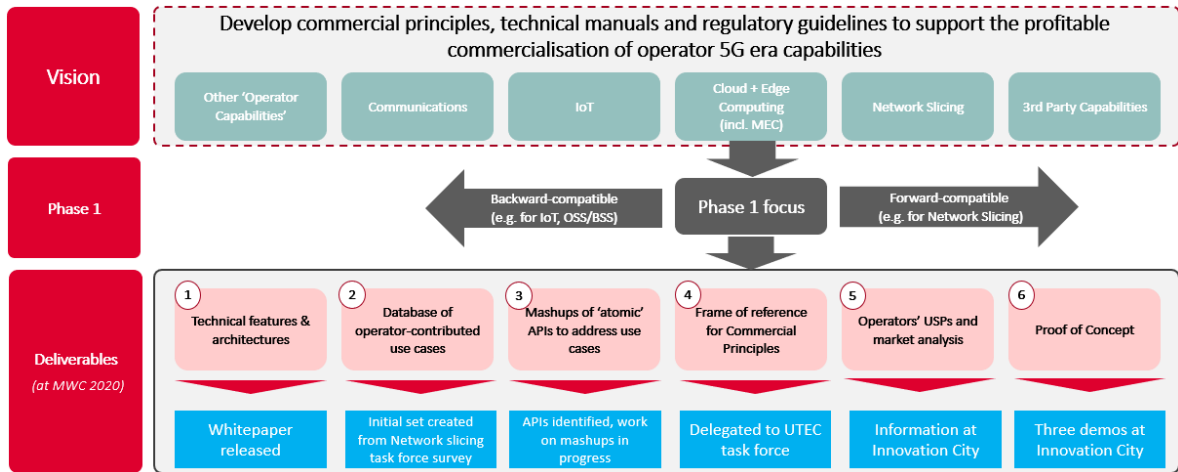




# Operator Platform, initial focus on Edge Computing

## First delivery in 2019: the Concept whitepaper

**Operator Platform**  
Decides to focus on Edge Computing in a First Phase



January 2020

<https://www.gsma.com/futurenetworks/resources/operator-platform-concept-whitepaper/>



# Operator Platform evolves in 2020... to elaborate a Permanent Reference Document

Operator Platform  
(Concept Whitepaper – Edge Cloud)

Feb 2020

## 30 Operators



Operator Platform Group  
(Permanent Reference Document)

- Reference architecture
- Technical requirements
- Liaison with SDOs for technical specs and OSCs for open source code

## 11 Technology Providers





# ...and Telco Edge Cloud taskforce is created aiming at launching a global Telco Edge Computing service

**Operator Platform Group**

**30 MNOs**

- Architecture, technical requirements
- Liaison with SDOs for technical specs and OSCs for open source code

<https://www.gsma.com/futurenetworks/resources/operator-platform-concept-whitepaper/>

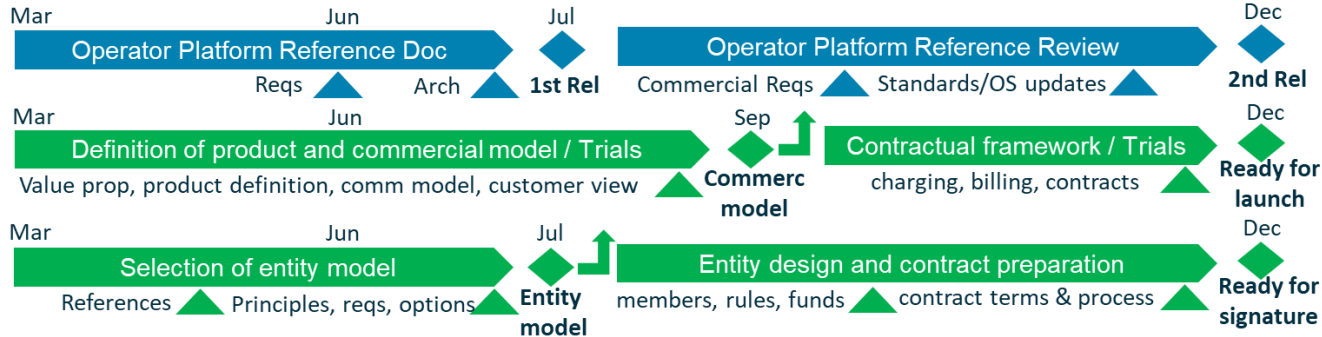
**Telco Edge Cloud taskforce**

**22 MNOs**

- Commercial and contractual models
- PoC and trials
- Launch of the global Edge Computing service

<https://www.gsma.com/newsroom/press-release/telecom-operators-collaborate-to-build-the-telco-edge-cloud-platform-with-gsma-support/>

March 2020



TEC LAUNCH  
2021



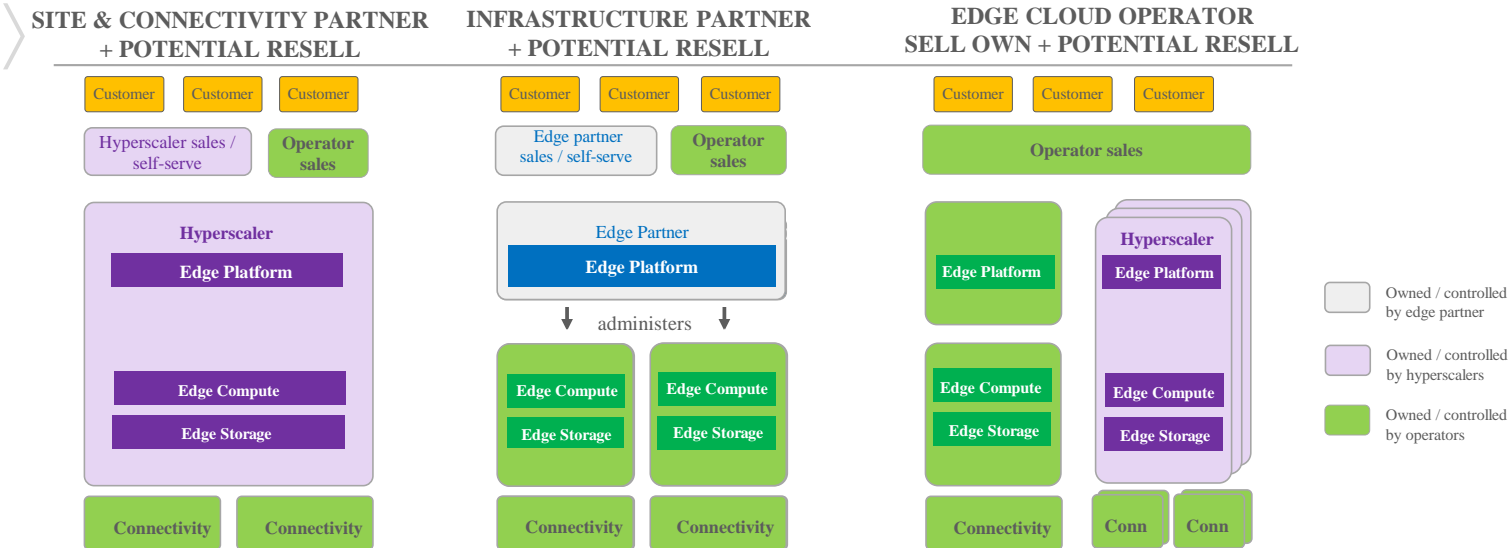
# Operator Platform Group

## OPG



# The Edge Cloud may follow several models depending on the ROLE the Operator wants to play

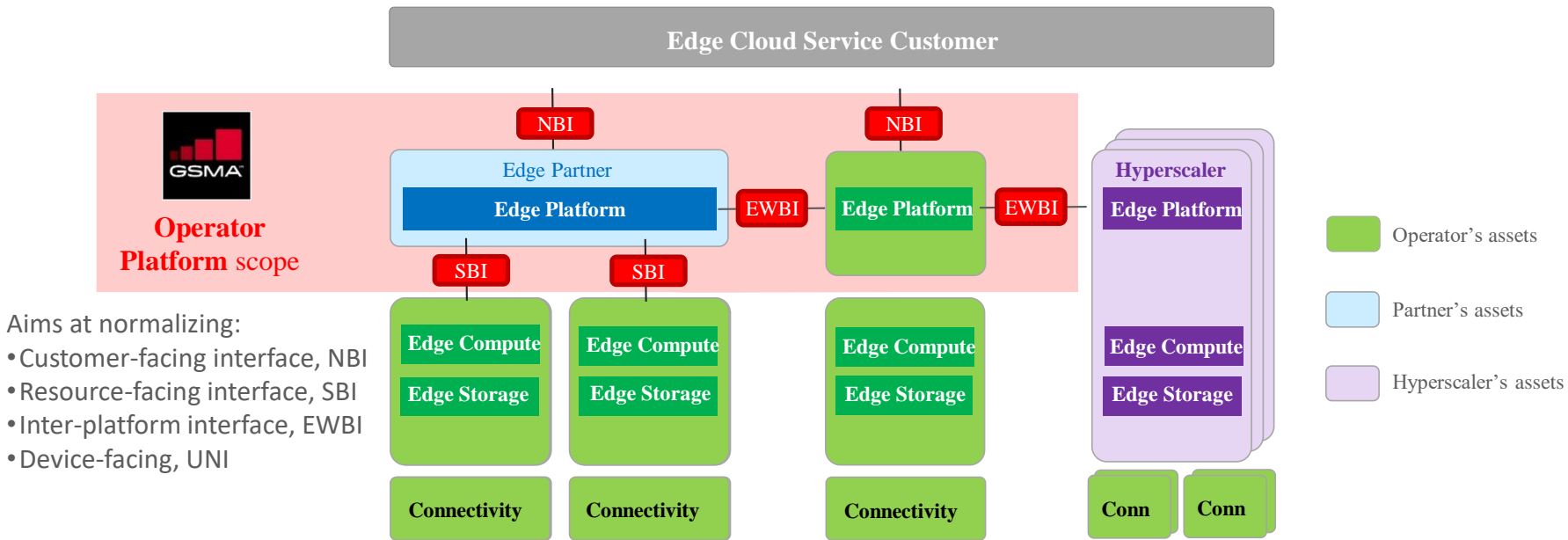
Operator role / business models





# OPG promotes Edge standardization and federation

in order to enable global Edge Cloud Services based on Telco Infra



Aims at normalizing:

- Customer-facing interface, NBI
- Resource-facing interface, SBI
- Inter-platform interface, EWBI
- Device-facing, UNI





# Operators are developing the missing Edge capabilities required for global reach, mobility and roaming support

The Edge Cloud is a Cloud but needs in addition:

- Smart Edge Resource allocation
- Smart Edge Connectivity
- **Federation** of Edge Computing platforms

...and when Mobility is required:

- Smart **Edge Discovery**
- **Mobility** support
- Service Availability in visited networks (**roaming** support)

At the **MultiOperator MEC Experience** project key operators and technology partners are working to design, develop and test this basic MEC functionality and support for **federation, mobility** and **roaming** to enable a global Telco Edge Cloud service

Operators:



Partners:



Contributing to:



March 2020

<https://www.telefonica.com/en/web/press-office/-/telefonica-signs-an-agreement-with-kt-corp-china-unicom-and-telstra-to-collaborate-on-the-multi-operator-edge-computing-experience>

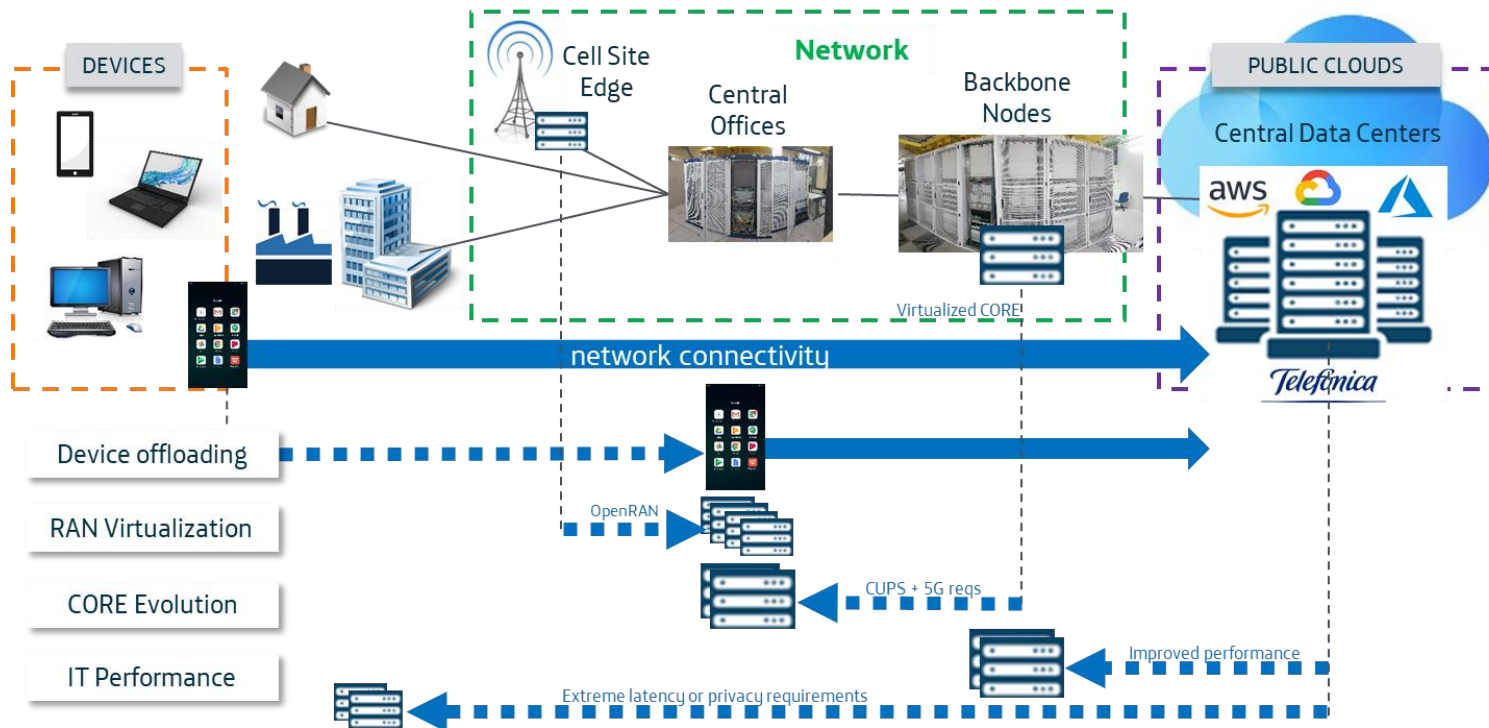


TELCO EDGE CLOUD

TEC Commercial workstream

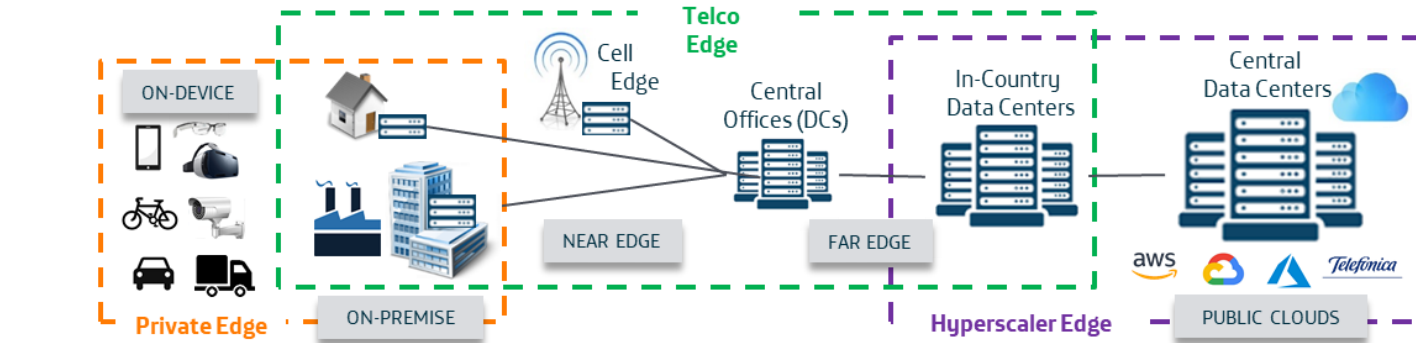


# Operators are going to deploy workloads at the Edge that is the natural evolution of its own network and their customer demand





# Need to understand motivations and barriers for Telco Edge usage to show customers the value of TEC and meet expectations



Scale (PoPs)	10s of millions	millions	thousands	hundreds	tenths
Typical latency	>1ms	<5ms	<10-20ms		>20ms



**Drivers for Edge** Latency reduction, data privacy/residency, transport efficiency

Multitenancy, **operational scale**, energy efficiency **Drivers for Cloud**



# The Telco Edge Cloud offers a wide footprint enabling a global Edge Computing service based on telco assets

- The Telco Edge Cloud is a global distribution system that offers Edge Computing services for customers to **develop, deploy and manage edge-based solutions over a global footprint**, benefiting from the unique capabilities that Telecom operators offer.
- It offers a **digital one-stop shop** for edge computing services, on a trusted and secure environment.
- It presents a **fair and transparent commercial model** across the value chain.
- TEC is built on edge technology based on a combination of **Open Source, Cloud and Telco standards**.
- It provides a single and simple interface (GUI, CLI, API), that facilitates the relationship with multiple Service Providers and multiple Mobile Operators, interconnected by open and standard federation mechanisms.
- TEC is supported by a group of 22 operators from Europe, Middle East, Asia-Pacific and the Americas.



TELCO EDGE CLOUD

TEC Trials workstream



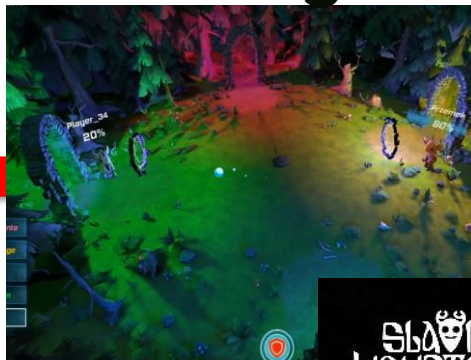
# Multi-operator VR gaming trial Telefonica-DT using MobileedgeX as an aggregation platform solution

Telefonica



Players in Spain with Telefonica Spain NW

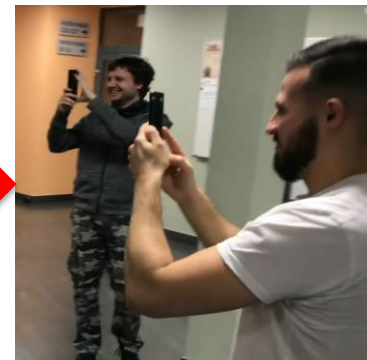
MobileedgeX



Joint virtual world of „Mythical Wars“



T . .



Players in Germany with Deutsche Telekom NW

**Multi-operator** and **multi-locations** consumer trial conducted between **Telefonica** and **Deutsche Telekom** using the **MobileedgeX** platform running on top of edge infrastructure provided by the participating operators.

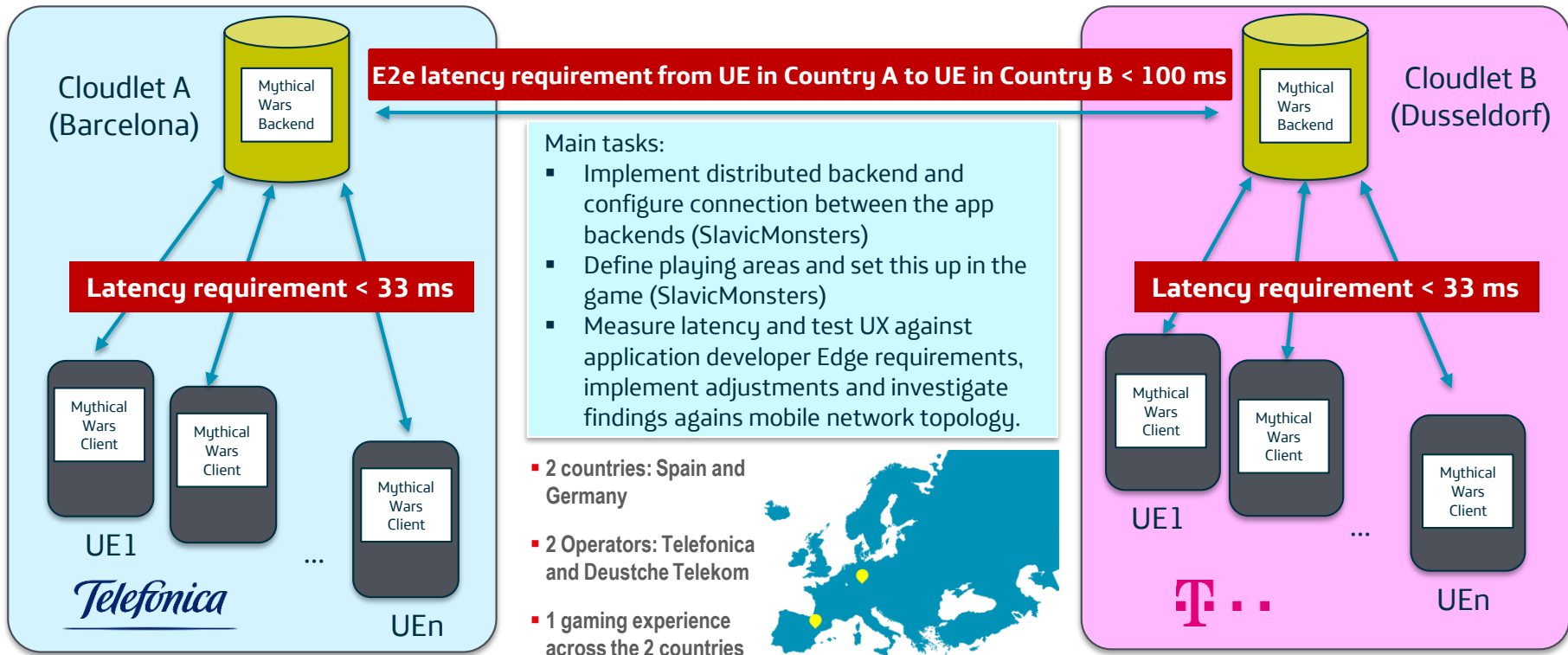
The participating operators are responsible to provide the connectivity between user devices and the respective edge location as well as between the edge locations with sufficient quality.

Content of the trial was a **XR multiplayer-game**, “**MythicalWars**”, developed with game provider **Slavic Monsters**.



# VR gaming trial set up and technical requirements

## connecting the applications across borders





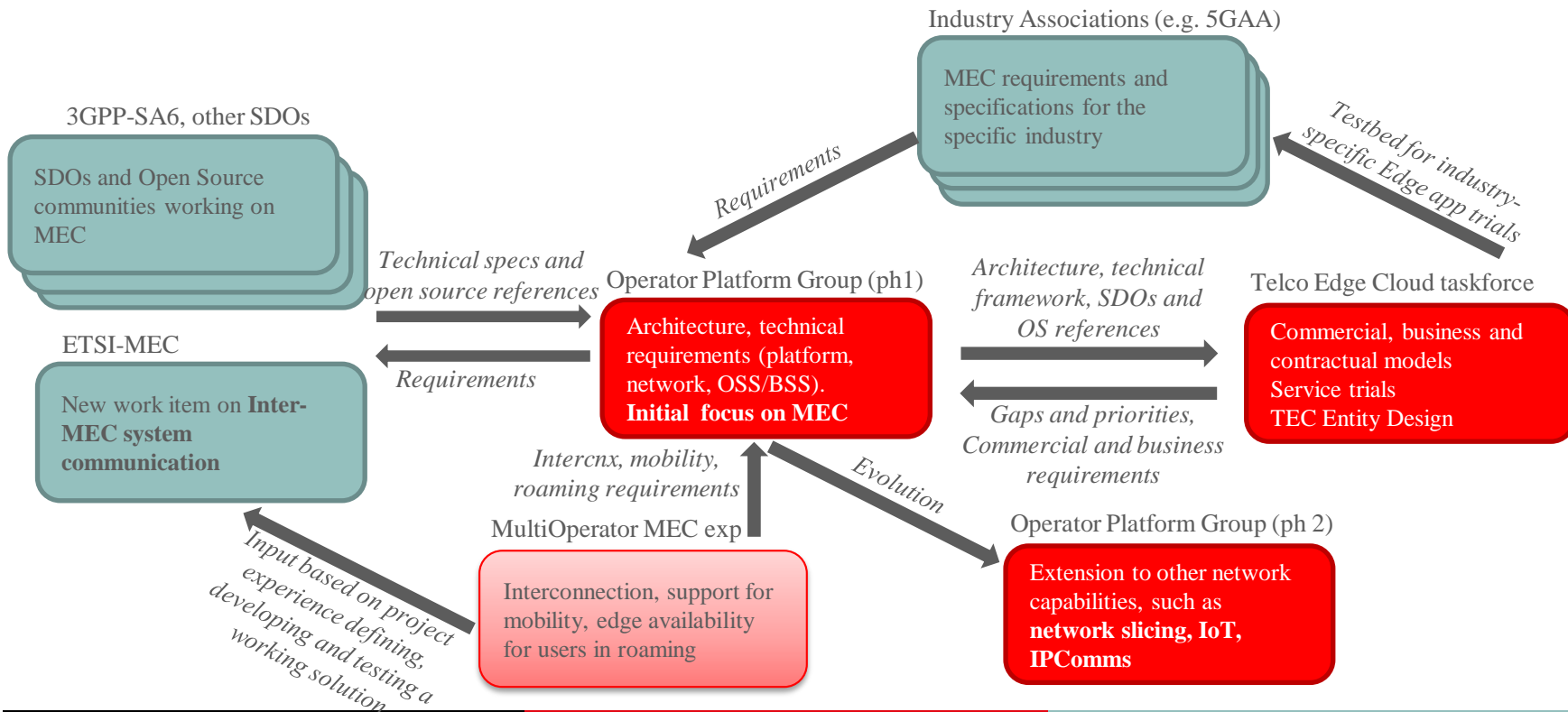
OPG/TEC

Industry Engagement



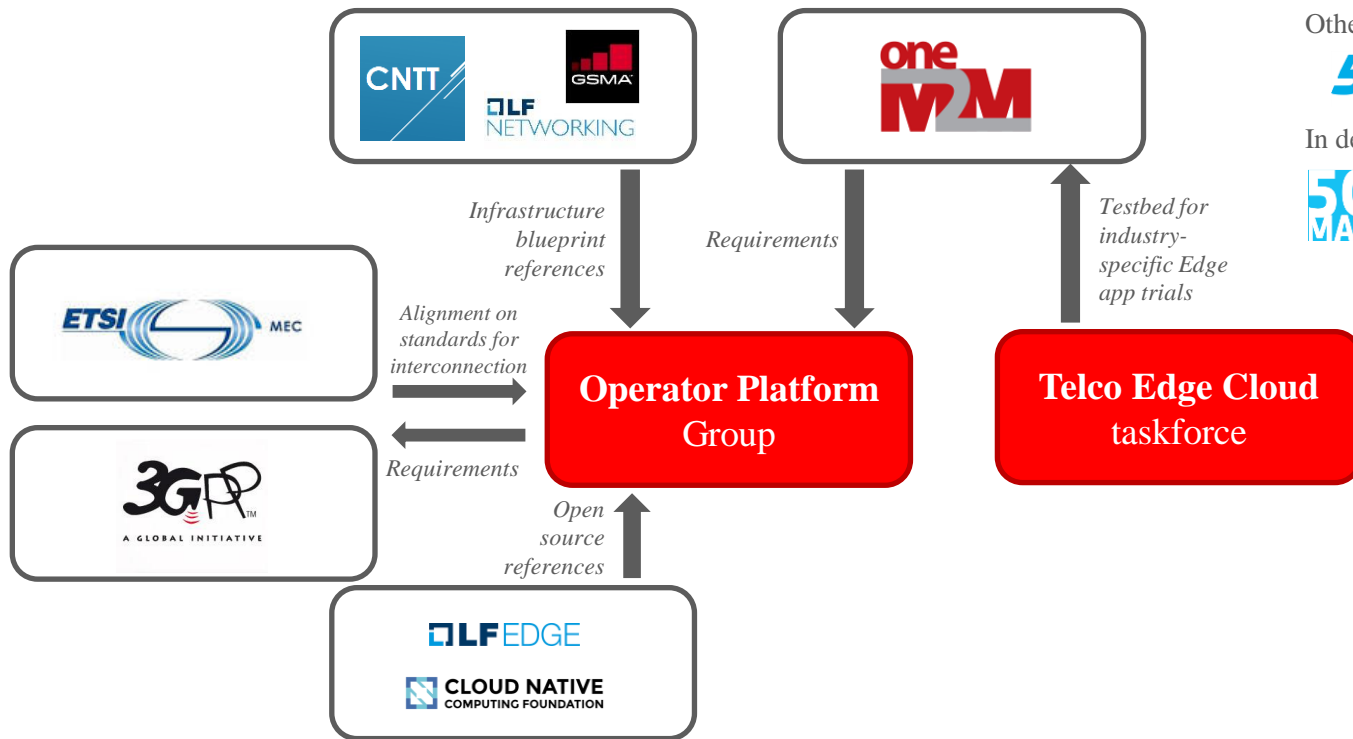
# ...building links to other Industry bodies

## from SDOs to Associations from other Industries





# Collaboration opportunities at the Edge following our OPENNESS principles



Other relationships:



In development:



